

CROSS-BORDER COOPERATION PROGRAMME

POLAND – BELARUS – UKRAINE

2007-2013

DRAFT

FEBRUARY 8TH, 2007

Contents:**CHAPTER 1**

1. Description and analysis of the geographical areas concerned by the programme.....	3
1.1. Basic characteristics including demography	3
1.2. Economic structure	4
1.3. Infrastructure.....	5
1.4. Education, research, culture	6
1.5. Environment and nature	7
1.6. Indicative Financing Plan.....	9
2. Coherence with other programmes and existing strategies.....	10
3. Objectives, priorities and measures of the programme.....	12
3.1. Context of the Programme	12
3.2. Priority 1. Increasing competitiveness of the border area.....	13
3.2.1 Measure 1.1. Business development.....	14
3.2.2 Measure 1.2. Tourism development.....	15
3.2.3 Measure 1.3. Improving the accessibility.....	15
3.3. Priority 2. Improving the quality of life.....	16
3.3.1 Measure 2.1. Improvement of cross-border natural environment protection.....	16
3.3.2 Measure 2.2. Efficient and secure borders.....	17
3.4. Priority 3. Networking and people-to-people cooperation.....	17
3.4.1 Measure 3.1. Regional and local cross-border cooperation capacity building.....	18
3.4.2 Measure 3.2. Local communities’ initiatives	19
3.5. Priority 4. Technical Assistance.....	20
4. Indicators	21
ANNEX 1. SWOT.....	23
ANNEX 2. Selected data: Subregions In 2005 (cells marked in red need to be amended).....	26
ANNEX 3. List and map of the environmental protection areas.....	32
ANNEX 4. Maps.....	33

1. DESCRIPTION AND ANALYSIS OF THE GEOGRAPHICAL AREAS CONCERNED BY THE PROGRAMME

1.1. Basic characteristics including demography

The Programme Area (see Annex 4) includes the following administrative units:

- in Poland: Krosniensko-przemyski sub-region (in Podkarpackie voivodship), Bialostocko-suwalski sub-region (in Podlaskie voivodship), Bialskopodlaski and Chelmsko-zamojski sub-regions (in Lubelskie voivodship), Ostrolecko-siedlecki sub-region (in Mazowieckie voivodship) and also as adjoining regions: Rzeszowsko-tarnobrzesci sub-region (in Podkarpackie voivodship), Lomzynski sub-region (in Podlaskie voivodship), and Lubelski sub-region (in Lubelskie voivodship).
- in Belarus: Grodno Oblast, Brest Oblast, 7 western districts of Minsk Oblast: Miadel, Vileika, Molodechno, Volozhin, Stolbtsy, Niesvizh, Kletsk) and as adjoining regions: eastern part of the Minsk Oblast (15 districts) and Gomel Oblast
- in Ukraine: Lvivska, Volynska, Zakarpatska Oblasts and as adjoining regions: Rivnenska, Ternopilska and Ivano-Frankivska Oblasts

The total area of territorial units eligible for the Programme amounts to 316.3 thousand km² comprising:

- Polish part of the Programme Area of 75.3 thousand km² (including 22.7 thousand km² of adjoining regions)
- Belarusian part: 138.5 thousand km² (including 68.9 thousand km² of adjoining regions)
- Ukrainian part: 102.5 thousand km² (including 47.8 thousand km² of adjoining regions)

The length of the border between Poland and Belarus is 418 km, between Poland and Ukraine: 535 km and between Belarus and Ukraine: 205 km (part of the border in the Programme Area).

The Programme Area is inhabited by 20.1 million people (2005), out of which 6.2 million in the Polish part, 7.3 million in the Belarusian part and 8.5 million in the Ukrainian part. The average population density in the entire eligible area amounts to 70 inhabitants/km² (83 inhabitants/km² in the Polish part, 53 inhabitants/km² in the Belarusian part and 83 inhabitants/km² in the Ukrainian part) (see Annex 2 and 4).

The number of the Area's inhabitants has been decreasing for the last few years in spite of the positive population growth rate in four Polish subregions: Rzeszowsko-tarnobrzesci, Krosniensko-przemyski, Ostrolecko-siedlecki and Lomzynski.

Depopulation results from the negative migration balance in the entire border zone which is further deepened by the negative population growth rate in most of the Programme Area.

In 2005 a major part of the Programme Area's population (65.3%) was in the productive age. 18.1% of the Programme Area's population was in the pre-productive age and 16.6% in the post-productive age¹.

1.2. Economic structure

Comparing to the EU average per capita GDP the Programme Area lags behind in terms of economic development and is characterised by a relatively high share of agriculture and industry in the employment as well as low competitiveness and innovativeness of the economy. The highest share of agriculture in the employment structure is recorded in Ostrolecko-siedlecki, Bialskopodlaski, Chelmsko-zamojski and Lomzynski subregions (over 50%). In the Belarusian part of the Programme Area this share varies between 10% (Gomel Oblast) and over 16% (Grodno and Minsk Oblasts), whereas in the Ukrainian part between 26% (Ivano-Frankivska Oblast) and up to 29% (Zakarpatska Oblast). It is only urban areas that are characterised by a low share of agriculture and high share of services in the employment. The average share of agriculture in the EU employment structure was 4.9% in 2005.

In 2005 the average per capita GDP amounted to some EUR 3.7 thousand in the Polish part of the area and EUR 1.2 thousand in the Ukrainian part. The average per capita GDP in 2005 in the Belarusian part of the Programme Area amounted to EUR 2.5 thousand. The average per capita GDP in the EU was EUR 21 740.6 in 2005. The border area demonstrates a positive economic growth rate: in 2005 the annual GDP growth amounted to 9.2% in Belarus, 3.2% in Poland and 2.6% in Ukraine². The average annual GDP growth rate in the EU was 1.7% in 2005.

The labour market in the Programme Area shows large disparities. Unemployment rate oscillated between 8 and 21% in 2005 in the Polish part of the Area, 7 and 10% in the Ukrainian part, whereas in the Belarusian part the officially recorded unemployment rate lied below 2%. Long-term unemployment is a problem that is especially acute in the Polish part of the Programme Area – it affects over 50% of the unemployed. In the Polish part women constitute some 50% of all unemployed, in the Belarusian part some 70% and in the Ukrainian some 60%.

The development of small and medium enterprises (SMEs) in the Programme Area is much lower than in the EU. In 2005 the number of SMEs per 1 000 people in the Programme Area oscillated between 57 and 102 in the Polish part, 3 and 5 in the Ukrainian part, 2 and 3 in the Belarusian part. The average index for the EU in 2005 amounted to 47 **(statistics needed – see Annex 2)**. Due to large differences in the institutional systems and the extent of the functioning of market mechanisms between

¹ Nationality structure – see Annex 2.

² The World Bank data.

Poland, Ukraine and Belarus the framework for SMEs activities and development varies between those countries. However even in the Polish part of the border zone, which due to the most advanced economic restructuring processes and EU membership has the best conditions for SMEs activities and support, the sector is still faced with numerous barriers and development problems (e.g. administrative and bureaucratic barriers). In connection with the level of economic development and the wealth level of the Area's population they contribute to relatively difficult conditions for SMEs.

In comparison with the EU average the economy of the Programme Area is characterised by low competitiveness (especially in terms of the quality and technological advancement) and low innovativeness. The HRST (Human Resources in Science and Technology) as a percentage of labour force in the EU amounted to 42.2 in 2005 while in the Polish sub-regions oscillated between 29.5 and 32.4. The research and development (R&D) spending is relatively low and the cooperation between scientific institutions (especially higher education institutions) and the business world and the public administration is not well developed. In 2005 gross domestic expenditure on R&D as a percentage of GDP in Poland amounted to 0.56 while in the EU to 1.85. In spite of numerous advantages, the flow of foreign direct investment (FDI) into the border zone is limited. There is a significant, unexplored potential in that aspect. The main barriers limiting FDI include weak transport infrastructure, insufficient cross-border cooperation, disparities in institutional systems and insufficient economic promotion.

1.3. Infrastructure

The geographical location of the Programme Area is very advantageous in terms of the development potential for transport. The area is situated on the main transit routes between European and Asian networks and is hence an important basis for the development of international road and rail transport. A significant share of the cargo transit belongs to the transport of gas, crude oil and petrochemical products by pipelines. The Area is crossed by the following Pan-European Transport Corridors:

- II: Berlin – Warsaw – Minsk – Moscow – Nizhny Novgorod. The corridor will consist of the modernised railway route C-E 20 and the planned A-2 motorway,
- III: Berlin – Dresden – Wrocław – Katowice – Krakow – Rzeszow – Medyka – Lviv – Kiev. The corridor consists among others of: the E 30 railway route (Dresden – Wrocław – Katowice – Krakow – Rzeszow – Medyka – Lviv – Rivne – Kiev) and the E 40 motorway (Dresden – Wrocław – Krakow - Rzeszow – Korczowa – Lviv),
- IX: Kiev-Gomel-Vitebsk and branch Minsk-Vilnius,
- V: Kosyn – Chop – Lviv – Rivne – Minsk,
- Baltic Sea – Black Sea International Transport Corridor: Baltic Sea ports – Jagodyn – Kovel – Lutsk – Rivne – Ternopil – Black Sea ports.

There are plans to finish the A-4 motorway till 2013 (Berlin – Wrocław – Katowice – Kraków – Rzeszów – Lviv) and the S19 express way (Kuźnica Białostocka – Białystok – Lublin – Rzeszów – Barwinek – Kosice – Bucharest) crossing the Programme Area.

The existing transport infrastructure (especially roads) needs development both in terms of the density as well as the quality in the first place. The highest road density is found in the Polish sub-regions (between 40 and 78 km per 100 sq. km). In the Ukrainian part of the borderland it varies between 25 and 38 km per 100 sq. km and in the Belarusian oblasts: from 27 to 47 km per 100 sq. km.

In order to benefit from the transit location express ways and bypasses, railways and rail infrastructure and border infrastructure must be expanded and modernised. It is required also to increase transport safety.

There is a need to develop and upgrade the existing border crossings and build new ones to assure smooth servicing of the current traffic levels and to foster both business and tourism cross-border flows. There are 13 border crossings at the Polish-Belarusian border (8.8 mln crossings in 2005, 8.8% rise comparing to 2004) and 12 border crossings at the Polish-Ukrainian border (17.8 mln crossings in 2005, 46.5% rise comparing to 2004).

Telecommunications accessibility and quality require improvements, however the development of mobile telephony has significantly improved access to telephone services in the entire Polish-Belarusian-Ukrainian Programme Area. Internet use is relatively low. Level of Internet access of households in Poland amounted to 30% in 2005 while in the EU – to 48%. The fixed-line telephony infrastructure is also relatively low developed. The number of main telephone lines per 100 inhabitants in 2003 amounted to 50 in the EU while in Poland only to 32. Subscriptions to cellular mobile services per 100 inhabitants in 2003 amounted to 81 in the EU while in Poland only to 46 (60 in 2004).

Also the public utilities infrastructure (public water conduits, public sewerage systems, waste water treatment plants, landfills) requires expansion and modernisation. **(statistics on the public utilities infrastructure need to be amended – see Annex 2)**

The tourist infrastructure is relatively weak, especially in terms of its quality standards. All the year accommodation capacity measured by a number of bed places (116,9 thousand in 2005, see Annex 2) does not meet the needs. Its expansion and upgrading is necessary to explore the tourist potential of the area eligible for the Programme and to foster business and cultural exchange.

1.4. Education, research, culture

The educational infrastructure in the Programme Area is relatively well developed, however it should be modernised and adapted to the labour market requirements. There are 179 universities/higher education institutions and over 1,2 mln students in the Programme Area.

Most dynamic development occurs in the private higher education system. The educational structure of the Polish-Belarusian-Ukrainian border zone is relatively good, however further increase of the share of people with higher education is necessary. The education profile is also important as it currently does not reflect the needs of a modern economy. There is a shortage of specialists in scientific disciplines, especially engineers, physicists, chemists with the highest qualifications.

The highest share of people with higher education is recorded in the Minsk City (35%), the Lvivska (29%) and Rivnenska (27%) Oblasts, whereas in the Polish part it varies between 12% - 21%. In other Belarusian sub-regions the share varies between 18% and 19.8%.

The research financing system does not reflect the challenges of the knowledge-based economy. In comparison with the EU the R&D sector cooperates little with the business sector, and the scope of research commercialisation is limited. Improved utilisation of the relatively high R&D potential is necessary in the Programme Area. The numerous higher education institutions of good scientific level could become a backbone for the effective innovation system based on the triple helix concept (cooperation of the business, science and public administration).

The Polish-Belarusian-Ukrainian border zone is rich in both tangible and intangible cultural heritage. Numerous monuments, including those of global significance, and the intangible culture in its many forms constitute development advantages not only for tourism but also for local communities living in the area. The cultural infrastructure is abundant (theatres, operas, cinemas, libraries, local cultural centres), however it needs financial resources for upgrading.

1.5. Environment and nature

The Polish-Belarusian-Ukrainian borderland has areas of outstanding landscape and natural values, of low pollution. A large part of the cross-border area is located in the so-called Green Lungs of Europe. The sites located in the Programme Area have a significant share in the European Environmental Network NATURA 2000 (a total of 31 thousand sq. km in the borderland zone). Protected areas constitute between 1% and 62% of the total area of the sub-regions covered by the Programme. The highest share is recorded in the Polish part³.

With its relatively unspoilt natural conditions and resources, picturesque landscape and cultural heritage the Programme Area has favourable conditions for the development of tourism.

The environmental protection infrastructure is insufficient. Many villages and smaller settlements lack sewerage and wastewater treatment systems and modern landfills. The Programme Area faces high fire risk and high flood hazard resulting from insufficient flood infrastructure. The existing infrastructure needs to be expanded and modernised.

The environmental awareness of the border zone populations requires to be significantly raised. Because of its geographical characteristics (cross-border forest complexes, rivers and protected areas), challenges of the environmental protection require cross-border cooperation.

(needed statistics – see Annex 2 and Annex 3)

³ For the list of environmental protection areas see Annex 3.

1.6. Indicative Financing Plan

Total allocation by years:			
YEARS	ENPI	COFINANCING	TOTAL ELIGIBLE COSTS
2007	14 983 438	1 498 344	16 481 782
2008	25 599 150	2 559 915	28 159 065
2009	27 981 783	2 798 178	30 779 961
2010	28 542 847	2 854 285	31 397 132
<i>2007 - 2010</i>	<i>97 107 218</i>	<i>9 710 722</i>	<i>106 817 940</i>
2011	29 112 398	2 911 240	32 023 637
2012	29 694 649	2 969 465	32 664 114
2013	30 287 102	3 028 710	33 315 813
<i>2011 - 2013</i>	<i>89 094 149</i>	<i>8 909 415</i>	<i>98 003 564</i>
<i>2007 - 2013</i>	<i>186 201 367</i>	<i>18 620 137</i>	<i>204 821 504</i>

Allocation by priorities and years:												
YEARS	Priority 1. Increasing competitiveness of the border area			Priority 2. Improving the quality of life			Priority 3. Networking and people-to-people cooperation			Priority 4. Technical Assistance		
	ENPI	COFINANCING	TOTAL ELIGIBLE COSTS	ENPI	COFINANCING	TOTAL ELIGIBLE COSTS	ENPI	COFINANCING	TOTAL ELIGIBLE COSTS	ENPI	COFINANCING	TOTAL ELIGIBLE COSTS
2007	0	0	0	0	0	0	0	0	0	0	0	0
2008	0	0	0	0	0	0	0	0	0	0	0	0
2009	0	0	0	0	0	0	0	0	0	0	0	0
2010	0	0	0	0	0	0	0	0	0	0	0	0
<i>2007 - 2010</i>	<i>0</i>	<i>0</i>	<i>0</i>	<i>0</i>	<i>0</i>	<i>0</i>	<i>0</i>	<i>0</i>	<i>0</i>	<i>0</i>	<i>0</i>	<i>0</i>
2011	0	0	0	0	0	0	0	0	0	0	0	0
2012	0	0	0	0	0	0	0	0	0	0	0	0
2013	0	0	0	0	0	0	0	0	0	0	0	0
<i>2011 - 2013</i>	<i>0</i>	<i>0</i>	<i>0</i>	<i>0</i>	<i>0</i>	<i>0</i>	<i>0</i>	<i>0</i>	<i>0</i>	<i>0</i>	<i>0</i>	<i>0</i>
<i>2007 - 2013</i>	<i>0</i>	<i>0</i>	<i>0</i>	<i>0</i>	<i>0</i>	<i>0</i>	<i>0</i>	<i>0</i>	<i>0</i>	<i>0</i>	<i>0</i>	<i>0</i>

2. COHERENCE WITH OTHER PROGRAMMES AND EXISTING STRATEGIES

Cross-border Cooperation Programme Poland-Belarus-Ukraine 2007-2013, under European Neighbourhood and Partnership Instrument (ENPI), continues and broadens the cooperation in the border zone areas of the three countries, which so far has been developed within the framework of the Neighbourhood Programme Poland-Belarus-Ukraine INTERREG III A/TACIS CBC 2004–2006 (Neighbourhood Programme).

The Neighbourhood Programme was managed by the Polish ministry responsible for regional development. The Joint Technical Secretariat was established in Poland. The process of managing and implementing the Programme at all stages was conducted in close cooperation with Belarusian and Ukrainian partners. In spite of differences between financing projects from ERDF and TACIS funds, a number of joint activities and enterprises of visible cross-border character have been undertaken successfully in the Programme Area. The guidelines to the ENPI Programme envisaged the opportunity of establishing a truly joint budget with equal access for all participating countries at the same rules.

The Neighbourhood Programme supported joint activities across numerous fields of interventions in the framework of three priorities including: competitiveness of the border area through modernization and development of the cross-border infrastructure, human capital and institutional cross-border cooperation including security at the European Union's borders, technical assistance.

Considerations for the ENPI Programme:

- The Neighbourhood Programme supported infrastructure, tourism, culture, environmental protection, human resources and people-to-people projects. The projects established new links between border regions and helped to break down the barriers in cross-border relationships. The role of the successor to the Neighbourhood Programme is to strengthen its achievements,
- Decentralisation of management and simplification procedures will speed up and improve the implementation of ENPI Programme,
- The inclusion of wider range of beneficiaries and ensuring participation of more partners from Belarus and Ukraine (with the financial contribution) will imply preparation of much more truly joint cross-border projects,
- The extension of the grant size will make it possible to implement large investment projects,
- Priorities and measures should not be divided into investment and non-investment ones, as this may hinder creation of many interesting projects.

Before 2004 activities in the eastern border areas of Poland were supported under the PHARE - Polish Eastern Border Programme, which was created in 1997. The programme functioned as part of the National PHARE programme. Funds were mostly

allocated to the measures aimed at the strengthening of the security on the Polish eastern border. The programme contained more elements connected directly with cross-border cooperation, which include large infrastructure projects on the Polish eastern border, as well as:

- Small Projects Fund – supporting small ‘people-to-people’ projects with cross-border impact; most projects aimed at cross-border cooperation in the field of culture and tourism,
- Small Infrastructure Projects Fund – supporting development in the fields of small-scale infrastructure activities across the border connected with tourism, environmental protection, cultural cooperation and economic development,
- Business Related Infrastructure Projects Fund – developing business related cross-border cooperation of the Polish institutions situated on the eastern border with their foreign partners.

The TACIS CBC Programme has become the major funding source for EU-financed technical assistance in Belarus. The distribution by sector (1996-1999 budgets) was 42% for Border Networks including a border management programme. The sector environment received 55% of the budget and 3% represents the budget of projects financed from the TACIS CBC Small Project Facility. Ukraine has been a beneficiary of the Tacis Cross-Border Cooperation Programme since 1996. During 1996 – 2003 the assistance was provided through three priorities: border infrastructure, environment, development of border regions.

Under the TACIS CBC Programme the project “Polish – Ukrainian Agency for Cross-Border Co-operation – Together towards the Future” was launched. As a result, the strategy of border regions development – involving two Polish (Lubelskie and Podkarpackie) and two Ukrainian (Lviv and Volyn) regions – for the years 2005-2015 was developed. The aim of the strategy is to determine the areas of bi- and multilateral cross-border co-operation.

In the processes of programming and introducing previous cross-border cooperation four euroregions located in the Polish-Belarusian-Ukrainian borderland, i.e. Niemen, Puszcza Bialowieska, Bug and Karpacki, have been involved strongly. They were responsible for managing the Small Projects Fund and Small Infrastructure Projects Fund within PHARE - Polish Eastern Border Programme. Within the Neighbourhood Programme they were responsible for implementation of the Micro Project Facility, under Priority 2, Measure 2 – Support for local community initiatives.

The Programme priorities are linked to development priorities of Poland, Belarus and Ukraine set out in the basic programming and planning documents adopted by the governments of the three countries as well as to the strategies and development plans realised on the regional level.

In Poland the Programme priorities are in line with the National Development Strategy and the National Cohesion Strategy (National Strategic Reference Frameworks) 2007-2013.

The Programme is coherent with the Schengen Facility for better controls at the new EU external borders and for building up administrative and institutional structures. The External Borders Fund on the Polish side of the border region will support crossing points infrastructure (modernisation and construction), necessary equipment, as well as basic and specialised training for border checks staff and operational officers.

The programme is in line with the strategic documents adopted by Belarusian government:

- The Concept of the National Strategy for Sustainable Social-Economic Development of the Republic of Belarus until 2020,
- The Concept of the Social-Economic Development of the Republic of Belarus until 2015,
- Basic Guidelines for the Social-Economic Development of the Republic of Belarus for the period until 2010.

The priorities of the Programme are in line with the strategic goals of the following documents adopted by Ukrainian authorities:

- State Programme of the Social and Economic Development of Ukraine,
- The National Strategy of the Regional Development of Ukraine 2004 – 2015,
- The law of the transboundary cooperation,
- The Conception of the State program of the development of the transboundary cooperation 2007-2010,
- Programme of Integration with the European Union,
- EU-Ukraine Action Plan.

3. OBJECTIVES, PRIORITIES AND MEASURES OF THE PROGRAMME

3.1. Context of the Programme

The main conclusions from the analysis of the Polish-Belarusian-Ukrainian border region are, as follows:

- ✓ the Programme Area is **relatively low developed economically** – with a comparatively low GDP per capita, a very high unemployment rate on the Polish side of the border, high share of agriculture in the employment structure, a relatively low innovativeness of SMEs and R&D spending;
- ✓ the Programme Area has areas of outstanding landscape and natural values, of low pollution – but **the environmental protection infrastructure and**

the environmental awareness of the borderland populations need upgrading;

- ✓ the Programme Area has a high potential to develop the tourism sector, including agrotourism, due to various natural environment and cultural heritage values – but **the tourist infrastructure requires improvement;**
- ✓ the geographical location of the Programme Area is very advantageous in terms of the development potential for transport and thus may substantially contribute to its economic enhancement – but **the existing transport and border infrastructure need improvement;**
- ✓ the Programme Area demonstrates **a relatively well developed educational infrastructure, however it needs modernisation** and stronger compliance with the requirements of knowledge-based economy;
- ✓ despite substantial progress due to the current cross-border cooperation **the level of integration of the Programme Area still needs improvement which makes it impossible to utilise fully the social and economic potential of the region.**

The core objective of the Programme – which reflects the above conclusions from the socio-economic analysis – is **responding to the common challenge of sustainable social and economic development through cross-border cooperation and integration.**

The core objective is consistent with the EC *Guidelines for preparing CBC Programmes under the ENPI* and the four objectives set in the *Guidelines*. There are four priorities (incl. Technical Assistance) and seven measures through which the core objective is going to be achieved. Three measures of the first priority are consistent with Objectives 1 (Economic and social development) set in the *Guidelines*. Activities envisaged in the *Guidelines* for Objective 2 (Common challenges) are included into Measures 2.1 and 2.2. Activities envisaged in the *Guidelines* for Objective 3 (Efficient and secure borders) are included into Measure 2.2. Two measures of the Priority 3 are consistent with Objective 4 (People to people co-operation) set in the *Guidelines*.

3.2. Priority 1. Increasing competitiveness of the border area

The cross-border area relatively lags behind in terms of its competitiveness. Increasing competitiveness of the Programme Area requires full utilisation of the existing social and economic potential of the region and its further development. Enhancing competitiveness is one of the key common challenges of sustainable social and economic development in the Polish-Belarusian-Ukrainian cross-border area. Thus it corresponds fully with the core objective of the Programme. Since the area demonstrates a high unemployment rate (especially on the Polish side of the border), a sustainable development requires facilitating the job creation processes.

As a result of socio-economic context analysis it is clearly seen that increasing competitiveness of the Programme Area is dependant on business development (Measure 1.1.), tourism development (Measure 1.2.) and the significant improvement of

the Programme Area's accessibility (Measure 1.3.). The actions under these three priorities are aimed at rising of investment attractiveness and increasing the development potential.

Within Priority 1 it will also be possible to implement projects covering preparation of plans and studies leading to the implementation of common initiatives. Priority 1 will be implemented in the whole Programme Area. Investment activities will be financed only in the core Programme Area.

Codes for the priority theme dimension: 02, 04, 05, 06, 09, 10, 11, 12, 14, 15, 16, 17, 23, 24, 26, 27, 28, 33, 34, 35, 36, 55, 56, 57, 58, 59, 60, 61, 62, 63, 64, 65, 66, 67, 68, 69, 71, 72, 73, 74, 75, 76, 79.⁴

3.2.1 *Measure 1.1. Business development*

Measure 1.1 aims at improving conditions for business development. Improvement of the quality of new technologies infrastructure contributes to increasing the area's investment attractiveness – both for the internal and external investors. Also soft-type activities aiming at socio-economic development of the eligible area will be promoted within Measure 1.1. Support will be provided to activities targeting among others: regional marketing, trade and investment promotion, development of SMEs, development of local and regional labour markets, development of information society, new technologies, improvement of cooperation between research and business institutions, socio-economic and environmental rehabilitation of technologically transformed areas and economic rehabilitation of contaminated areas.

Measure 1.1. is consistent with the Objective 1 (Economic and social development) set in the EC *Guidelines for preparing CBC Programmes under the ENPI*.

Exemplary beneficiaries:

- ✓ local and regional authorities in the border regions concerned
- ✓ non-governmental organisations and non-profit organisations such as business support organisations, local enterprise agencies, development agencies, chambers of commerce, tourism agencies, educational and training and research institutions; producers associations, labour unions, employment agencies
- ✓ state organisations/institutions
- ✓ euroregions

⁴ Codes are defined in annex II to Commission Regulation (EC) No 1828/2006 of 8.12.2006 setting out rules for the implementation of Council Regulation (EC) No 1083/2006 laying down general provisions on the European Regional Development Fund, the European Social Fund and the Cohesion Fund and of Regulation (EC) No 1080/2006 of the European Parliament and of the Council on the European Regional Development Fund, Official Journal of the European Union of 27.12.2006, L 371, see Annex 5.

3.2.2 *Measure 1.2. Tourism development*

The main goal of Measure 1.2. is to improve and to utilise fully the tourist potential of the region. The Programme Area has a high potential to develop the tourism sector, including agrotourism, due to various natural environment and cultural heritage values – but the tourist infrastructure is requires improvement. Therefore, the support will be given to the development of tourist infrastructure and services. Also soft-type activities targeting among others: regional promotion, tourism and agro-tourism development, and protection of cultural heritage will be promoted within Measure 1.2.

Measure 1.2. is consistent with the Objective 1 (Economic and social development) set in the *EC Guidelines for preparing CBC Programmes under the ENPI*.

Exemplary beneficiaries:

- ✓ local and regional authorities in the border regions concerned
- ✓ non-governmental organisations and non-profit organisations such as business support organisations, local enterprise agencies, development agencies, chambers of commerce, tourism agencies, educational and training institutions, producers associations
- ✓ state organisations/institutions
- ✓ euroregions

3.2.3 *Measure 1.3. Improving the accessibility*

The geographical location of the Programme Area is very advantageous in terms of the development potential for transport and thus may substantially contribute to its economic development – but the existing transport and border infrastructure needs upgrading. Therefore, activities supported within the Measure 1.3. include improvements in the quality and accessibility of the social and economic infrastructure, with focus on transport, energy, logistic systems, transport safety and water supply.

Infrastructure development will improve the area's accessibility for potential investors, raise the living standards of inhabitants, and boost tourist and economic attractiveness of the border area.

Measure 1.3. is consistent with the Objective 1 (Economic and social development) set in the *EC Guidelines for preparing CBC Programmes under the ENPI*.

Exemplary beneficiaries:

- ✓ local and regional authorities in the border regions concerned
- ✓ non-governmental organisations
- ✓ public road and rail management companies
- ✓ public owned transport providers
- ✓ state organisations/institutions

- ✓ euroregions

3.3. Priority 2. Improving the quality of life

Improving the quality of life and increasing the sustainable development potential of the Programme Area is dependant on the improvement of cross-border natural environment protection (Measure 2.1). Within this measure actions are aimed at rising of living standards of both borderland population and potential external investors as well. A sine qua non condition of higher quality of life in the Programme Area is also an advanced efficiency and safety of the borders (Measure 2.2). Investment and organization activities in this area will contribute to the acceleration of cross-border flows of people and goods. It will result in a positive impact on the level of social and economic integration of the Programme Area and its higher safety. This is crucial for higher investment attractiveness and competitiveness of the whole region.

Within Priority 2 it will also be possible to co-finance projects aiming at preparation of plans and studies leading to the implementation of common initiatives. Priority 2 will be implemented in the whole Programme Area. Investment activities will be financed only in the core Programme Area.

Codes for the priority theme dimension: 39, 40, 41, 42, 43, 44, 45, 46, 47, 48, 49, 50, 51, 52, 53, 54.

3.3.1 *Measure 2.1. Improvement of cross-border natural environment protection*

Measure 2.1 aims at protecting and improving the quality of natural environment. Improvement of the quality of natural environment contributes to increasing inhabitants' living standards as well as boosting the area's tourist and investment attractiveness. This goal will be achieved mainly through investments in the environmental infrastructure of regional or local impact and improvement of cross-border cooperation in environmental protection.

This measure will promote activities focusing on environmental protection and natural heritage, especially on: improving solid waste management and wastewater treatment, monitoring of environmental conditions and preventing environmental threats. Systemic solutions for environmental emergency situations management will be supported. Activities promoting wider usage and development of renewable energy sources will also be implemented.

Measure 2.1 is consistent with the Objective 2 (Common challenges) set in the EC *Guidelines for preparing CBC Programmes under the ENPI*.

Exemplary beneficiaries:

- ✓ local and regional authorities in the border regions concerned
- ✓ non-governmental organisations and non-profit organisations

- ✓ local and regional water management, waste water management, river protection and flood protection public bodies
- ✓ local environment protection agencies
- ✓ public institutions responsible for management of nature protection areas and nature parks and local forestry directorates
- ✓ public road and rail management companies, public owned transport providers
- ✓ state organisations/institutions
- ✓ euroregions

3.3.2 *Measure 2.2. Efficient and secure borders*

Measure 2.2 has the objective to increase the efficiency of border infrastructure and procedures and to improve border security. Higher throughput capacity of border crossing points and their security are critical for the achievement of the Programme objectives. In order to better utilise and expand the social and economic potential within the Programme area it is most of all necessary to alleviate the administrative, institutional and infrastructural obstacles to free movement of goods and people across borders. Support is planned for activities increasing the transparency and efficiency of border controls and customs procedures. These activities must aim at speeding up border procedures and result in fast and secure border passage. Border-related services are also to be developed. Support will be granted for the construction of new border crossings in addition to the border infrastructure development projects financed within the External Borders Fund. Measure 2.2 will also cover activities aiming at increasing border security, especially focusing on prevention and eradication of illegal migrations and trafficking, fight against organised crime, prevention of communicable human, animal and plant diseases. Additionally support is envisaged for the development of an emergency management system.

Measure 2.2 is consistent with the Objective 3 (Efficient and secure borders) and Objective 2 (Common challenges) set in the *EC Guidelines for preparing CBC Programmes under the ENPI*.

Exemplary beneficiaries:

- ✓ local and regional authorities in the border regions concerned
- ✓ non-governmental organisations and non-profit organisations
- ✓ regional divisions of Border Guard and customs authorities
- ✓ state organisations/institutions
- ✓ euroregions

3.4. **Priority 3. Networking and people-to-people cooperation**

The extent of social and economic integration of the Programme Area should be enlarged. The situation in this respect has gradually improved due to the cross-border

cooperation. A sustainable social and economic development of the Polish-Belarusian-Ukrainian cross-border area requires further deepening and widening of the cross border cooperation to achieve a greater degree of integration. **The aim of the priority is to promote CROSS-BORDER social and economic activities and consequently to create better conditions for development in the Polish-Belarusian-Ukrainian border region.**

The measure 3.1 will mainly support creation of permanent cooperative structures among the local and regional organisations and institutions to enhance the cross-border cooperation capacity. Sustainable social and economic development of the Polish-Belarusian-Ukrainian border region will only be possible when the local communities inhabiting the area cooperate in as many areas as possible on a regular basis (Measure 3.2). Projects implemented under the priority will aim at enhancing various aspects of institutional co-operation with particular focus on local and regional authorities, business and scientific co-operation, culture, education, labour market, as well as addressing common challenges of sustainable social and economic development. Effective cross-border cooperation leading to the integration of the local communities will be the greatest asset of the Programme.

Within Priority 3 it will also be possible to implement projects covering preparation of plans and studies leading to the implementation of common initiatives. Priority 3 will be implemented in the whole Programme Area. Investment activities will be financed only in the core Programme Area.

Codes for the priority theme dimension: 03, 11, 13, 14, 57, 60, 74, 80, 81.

3.4.1 Measure 3.1. Regional and local cross-border cooperation capacity building

The goal of Measure 3.1 is to improve the cross-border cooperation capacity on the local and regional level. Support is planned mainly for activities aiming at increasing the institutional cooperation potential. It is expected to develop as a result of the creation of institutional forms of cross-border cooperation. Information exchange and networking cooperation will be promoted, including internet-based projects.

Cooperation among public institutions, especially territorial self-governments, is perceived as highly important, in particular in the area of strategic and spatial planning. Joint initiatives in respective areas will be implemented with a view to increasing the degree of integration of the Programme's eligible areas. Particular stress will be laid on the dissemination of "good practice" examples within the Programme's scope.

Additionally it is planned to support the development, implementation and use of information and communication technologies for cross-border cooperation.

Measure 3.1 is consistent with the Objective 4 (People to people co-operation) set in the *EC Guidelines for preparing CBC Programmes under the ENPI*.

Exemplary beneficiaries:

- ✓ local and regional authorities in the border regions concerned
- ✓ non-governmental organisations and non-profit organisations such as business support organisations, local enterprise agencies, development agencies, chambers of commerce, tourism agencies, educational and training institutions; producers associations, labour unions
- ✓ organisations and other public bodies involved in health and social development
- ✓ organisations and institutions active in the fields of Programme objectives

3.4.2 *Measure 3.2. Local communities' initiatives*

The overall objective is social, scientific, educational and cultural integration of the borderland area. Within the scope of Measure 3.2 it is intended to support cross-border citizen contacts and social initiatives, scientific and educational cooperation, cultural and sporting events. Cross-border cooperation among schools and higher education institutions will be supported, including students, pupils, teachers and scientists exchange, conferences and scientific seminars. Support will also be provided for projects directed towards development of social initiatives, cultural and sports events. Projects aimed at promotion and cultivation of common traditions of the borderland areas will also be eligible for assistance. Favourable conditions will be created with a view to facilitating mutual contacts between border communities. Assistance is also planned for projects concerning cultural diversity, national minorities as well as development of the civic society and local communities in the broad sense.

Communities inhabiting the borderland zone are linked with cultural and historical ties. In spite of the significant development of cooperation, however, it is still important to overcome cultural, psychological or linguistic barriers. It is equally important to create new ties through supporting cross-border cooperation among various actors, which will facilitate further integration. Networks of cities play a considerable role here. These activities will also contribute to the strengthening of the regional identity and mutual understanding as well as overcoming the existing barriers.

Development of multi-layer cooperation, including educational and cultural, will enhance knowledge about the region and the promotion of its cultural and economic diversity, leading to further integration of local communities. Intensified cooperation will also contribute to solving common problems.

Measure 3.2 is consistent with the Objective 4 (People to people co-operation) set in the *EC Guidelines for preparing CBC Programmes under the ENPI*.

Exemplary beneficiaries:

- ✓ state organisations/institutions
- ✓ local and regional authorities in the border regions concerned
- ✓ non-governmental organisations and non-profit organisations such as business support organisations, local enterprise agencies, development

agencies, chambers of commerce, tourism agencies, educational and training institutions, producers associations, labour unions, employment agencies

- ✓ educational and training institutions, organisations and other public bodies involved in cultural, social and sports activities

3.5. Priority 4. Technical Assistance

The goal of Priority 4 lies in the effective Programme implementation through providing competent preparation, management, implementation, monitoring, audit and control of the Programme as well as supporting partner search initiatives and Programme-related promotion and information activities.

In order to successfully implement the Programme it is necessary to prepare an appropriate management and implementation system. The institutions responsible for those processes must be supported through technical assistance among others. Providing and effective Programme promotion and information system is also crucial. Technical assistance will be earmarked for the support in elaboration and assessment of projects, carrying out of evaluations, preparation of Programme documents, as well as expert support.

Particular attention will be given to the enhancement of the final beneficiaries' capacity to absorb the Programme assistance. Projects contributing to human resources development will also be eligible. Support is planned as well for other projects aimed at enhancing the quality of institutions involved in the Programme management and implementation, in particular related to the activities of the Joint Managing Authority, the Steering Committee, the Joint Technical Secretariat and its antennas.

Another support area within Priority 4 covers projects connected with partner search initiatives and the Programme promotion and information. It will include informing potential beneficiaries about possibilities to receive assistance within the Programme's framework, about consulting support for applicants, as well as disseminating good practices. Support is also planned for information activities on Programme management, monitoring and evaluation. Projects aiming at ensuring appropriate information flow among institutions and actors involved in project management and implementation will be supported as well.

Within the priority's framework a whole range of other promotional and information activities will be carried out. Trainings, seminars, conferences will be organised among others, focusing on raising awareness about the Programme and its goals. Programme information will be disseminated by means of TV, radio, press, internet sites, brochures, leaflets etc. Communication will be targeted at potential applicants, beneficiaries and the society in order to raise Programme awareness.

Codes for the priority theme dimension: 85, 86.

Exemplary beneficiaries:

- ✓ institutions/bodies involved in the Programme management and implementation, in particular: the Joint Managing Authority, the Joint Technical Secretariat and its antennas, the Steering Committee and the Selection Committees, euroregions.

4. INDICATORS

PROGRAMME LEVEL

Output indicators:

- ✓ number of projects realised within the Programme (**number**)

PRIORITY LEVEL

PRIORITY 1. INCREASING COMPETITIVENESS OF BORDER AREA

Input indicator:

- ✓ the budget allocated to the Priority 1 (**% of total allocation**)

Output indicators:

- ✓ value of implemented projects aimed at business development (**% of priority allocation**)
- ✓ value of implemented projects aimed at tourism development (**% of priority allocation**)
- ✓ value of implemented projects reducing isolation through improved access to transport, information and communication technologies networks and services (**% of priority allocation**)

Result indicator:

- ✓ additional population served by improved business infrastructure (**persons**)
- ✓ additional population served by improved tourism infrastructure (**persons**)
- ✓ additional population served by improved transport infrastructure (**persons**)

PRIORITY 2. IMPROVING THE QUALITY OF LIFE

Input indicator:

- ✓ the budget allocated to the Priority 2 (**% of total allocation**)

Output indicators:

- ✓ value of implemented projects aimed at the improvement of cross-border natural environment protection (**% of priority allocation**)

- ✓ value of implemented projects aimed at borders efficiency and security improvements (**% of priority allocation**)

Result indicator:

- ✓ additional population served by improved environmental infrastructure (**persons**)
- ✓ additional capacity of the new border crossings (**persons/year**)

PRIORITY 3. NETWORKING AND PEOPLE-TO-PEOPLE COOPERATION

Input indicator:

- ✓ the budget allocated to the Priority 3 (**% of total allocation**)

Output indicators:

- ✓ value of implemented projects aimed at the regional and local cross-border cooperation capacity building (**% of priority allocation**)
- ✓ value of implemented projects aimed at supporting the local communities' initiatives (**% of priority allocation**)
- ✓ value of implemented projects developing collaboration in the field of public services (**% of priority allocation**)

Result indicator:

- ✓ (**core ind.**): number of people participating in joint education or training activities (**persons**)
- ✓ (**core ind.**): number of benefiting students (**persons**)
- ✓ number of people participating in joint cultural or sport activities (**persons**)
- ✓ number of collaborating institutions and organisations (**number**)

PRIORITY 4. TECHNICAL ASSISTANCE

Input indicator:

- ✓ the budget allocated to the Priority 3 (**10% of total allocation**)

Result indicator:

- ✓ efficiency of implementing agencies (**EUR/person employed in implementing agencies**)
- ✓ number of distributed information and promotion publications (**number**)
- ✓ number of TV and radio programmes and press articles about the Programme (**number**).
- ✓ average time passing from submitting application to contracting

ANNEX 1. SWOT

Strengths	Weaknesses	Opportunities	Threats
Infrastructure			
<ul style="list-style-type: none"> • convenient location for passenger and cargo transit • sufficient density of transport network • good access to gas, oil and petroleum transport • large quantity of unused airports • huge opportunities for potential investments 	<ul style="list-style-type: none"> • lack of highways, ring roads for towns • poor quality of road infrastructure • limited road capacity • number of border crossings still does not meet the requirements of passenger and cargo traffic • closure of crossing points for small border traffic • insufficient access to telecommunication services (internet, mobile and wire telephone) • poor infrastructure of sewage and waste treatment facilities • lack of local crossing points • low capacity of existing crossing points • limited road cargo capacity • low level of renewal energy sources use 	<ul style="list-style-type: none"> • development of border crossing infrastructure • modernization and extension of roads, including expressway • opportunities in development of existing transport systems which may used for international cargo transit • reopening of crossing points for small border traffic • development of tourist infrastructure along highways • development of informational infrastructure • creation of pedestrian border crossing infrastructure for active tourism development • development of techno- and industrial parks 	<ul style="list-style-type: none"> • traffic routes run across protected areas • lack of funds for development and modernization of communication system and new border crossing infrastructure
Economy			
<ul style="list-style-type: none"> • fixed production traditions in certain branches of industry, such as: timber, meat processing, brewing, tobacco, chemical and light industry and crafts • geographic location favours development of trading relations with the EU, East Europe and Asia • high quality raw material base for agro-food and timber processing + food and electromechanical industries • occurrence of mineral and mining resources increasing rate of SMEs • commercial exchange traditions 	<ul style="list-style-type: none"> • concentration of economic activity in the declining sectors • concentration of economic activity around urban agglomerations only • low level of innovative activities in enterprises • poor technological level of enterprises • low level of investment and capital inflow • poorly developed business support institutions and commercial information systems • poor legislation on waste treatment infrastructure • low efficiency of energy use • legal and administrative barriers 	<ul style="list-style-type: none"> • introduction of high-tech • stimulation of initiatives for more economic activity • capital inflow to the border area • development of cross-border business cooperation • alleviation of visa regime for companies • regional strategy development 	<ul style="list-style-type: none"> • low growth rate in non-urban agglomerations • introduction of visas for Belarussian and Ukrainian citizens • lack of economic spatial planning • competition in agriculture between Poland and Ukraine • further complication of the visa regime

	for business cooperation		
Environment			
<ul style="list-style-type: none"> • large area of protected zones • low level of environmental pollution • vast areas for tourism development • biodiversity of the flora and fauna • areas listed by the UNESCO 	<ul style="list-style-type: none"> • insufficient protection of natural landscapes, habitats, flora and fauna against adverse technological impact • low environmental awareness • lack of common programming and monitoring • lack of waste treatment technologies • high quantity of ecologically dangerous objects 	<ul style="list-style-type: none"> • co-operation in respect of trans-boundary protected areas • development of advanced technologies in environmental protection in cooperation with scientific institutions • development of common ecological balance territorial policy • introduction of ISO standards • joint introduction of Kyoto protocol • introduction of common digital databases of impacts on environment 	<ul style="list-style-type: none"> • low inputs to environmental investments • pollution of water and lakes • high cost of maintaining the unique wildlife environment • high costs of unique environment protection • economic activities in protected areas • high chance of technological catastrophes • global warming
Tourism and Culture			
<ul style="list-style-type: none"> • outstanding natural and landscape values • numerous sites of high therapeutic values - spas, springs, health resorts etc. • great number of places of historical interest and tourism potential • great number of agro tourist facilities • numerous cultural sites registered on the UNESCO world heritage list • common tourist products • achievements in tourist and cultural cooperation • common cultural heritage 	<ul style="list-style-type: none"> • low standard of tourism facilities • shortage of high quality accommodation in motels and hotels • underdevelopment of tourist information system • bad condition of monuments and historical areas • lack of common tourist strategy of border regions • lack of leisure infrastructure • poor promotion of regional tourist products 	<ul style="list-style-type: none"> • restructuring of tourist facilities • establishment of international tourism areas • implementation of joint cross-border strategy for tourism • renovation of monuments; • establishment and improvement of cultural co-operation and networks • development of cultural products, events and initiatives • fast development of agro- and ecotourism • creation of cross-border tourism products • creation of tourist information centres • introduction of common tourist standards 	<ul style="list-style-type: none"> • insufficient level of investment in the tourism sector (including sport and recreation) • lack of non-commercial promotion of regional tourism potential • uncontrolled tourist movement development • lack of common tourism development strategy
Labour market, education, social institutions			

<ul style="list-style-type: none"> • well developed high education base • most of the population are working age • low labour cost • great entrepreneurial potential • highly qualified personnel, staff exchange • high number of new NGOs • high people mobility 	<ul style="list-style-type: none"> • high level of registered and hidden unemployment • high unemployment levels among graduates • low level of per capita income • language barriers • insufficient social and educational infrastructure facilities in the area • unfavourable employment structure • lack of basic social infrastructure in rural areas • low institutional cooperation • high migration 	<ul style="list-style-type: none"> • ethnic and cultural differentiation of population • high quality of human capital in terms of education and skills • development of sector • facilitation of relations between local self-governments and local communities • introduction of European standards in the system of self-government 	<ul style="list-style-type: none"> • high and continuously growing unemployment • growing social pathology rates • illegal immigration of young and qualified people • insufficient authority and funds on the local level
---	--	---	--

ANNEX 2. SELECTED DATA: SUBREGIONS IN 2005 (cells marked in red need to be amended)

Region		Land area (sq. km)	Number of inhabitants	Population density (people/ sq km)	Accommodation capacity all the year (number of bed places)
Poland	Rzeszowsko-tarnobrzeski subregion	7512	1 158 156	154	6250
	Krosniensko-przemyski subregion	10332	940 107	91	10966
	Ostrolecko-siedlecki subregion	12090	753598	62	2756
	Bialskopodlaski subregion	5977	311600	52	5483
	Chelmsko-zamojski subregion	9290	660427	71	5908
	Lubelski subregion	9847	1213129	123	8115
	Bialostocko-suwalski subregion	14871	892000	60	10451
	Lomzynski subregion	5316	310400	58	2130
Ukraine	Lvivska Oblast	21831	2577129	118	8701
	Volynska Oblast	20143	1040429	52	907
	Zakarpatska Oblast	12800	1245500	97	2005
	Rivnenska Oblast	20058	1155419	58	3600
	Ternopilaska Oblast	13823	1112126	80	3082
	Ivano-Frankivaska Oblast	13900	1393600	100	12500
Belarus	Brest Oblast	32800	1445600	44	3193
	Gomel Oblast	40400	1485100	37	7500
	Grodno Oblast	25100	1123500	45	7314
	Minsk	40200	1780700	81	16100
	Minsk Oblast		1474100		

Region		Pre-productive population (age 0-14)* (in %)	Productive population (age 15-64)* (in %)	Post-productive population (age over 65)* (in %)	Natural growth/loss (persons)	Migration growth/loss (persons)	Total growth/loss (persons)
Poland	Rzeszowsko-tarnobrzeski subregion	18,0	69,4	12,6	1706	-898	808
	Krosniensko-przemyski subregion	18,2	68,5	13,3	530	-1487	-957
	Ostrolecko-siedlecki subregion	18,7	67,4	13,9	367	-1962	-1595
	Bialskopodlaski subregion	18,4	67,5	14,2	-140	-1189	-1329
	Chelmsko-zamojski subregion	17,1	67,9	15,0	-1325	-1995	-3320
	Lubelski subregion	16,5	69,6	13,9	-371	-1717	-2088
	Bialostocko-suwalski subregion	18,4	67,0	14,6	-1050	-751	-1801
	Lomzynski subregion	21,0	65,5	13,5	14	-904	-890
Ukraine	Lvivska Oblast	16,5	68,8	14,7	-9189	-1723	-10219
	Volynska Oblast	18,7	66,7	14,6	-3256	-1092	-4348
	Zakarpatska Oblast	21,0	60,8	18,2	-706	-2333	-3039
	Rivnenska Oblast	19,5	67,0	13,5	-1938	-2278	-4216
	Ternopiiska Oblast	18,5	73,9	18,5	-5767	-1680	-7447
	Ivano-Frankivska Oblast	19,8	58,7	21,5	-3039	-1167	-4206
Belarus	Brest Oblast	18,6	60,1	21,3	-5472	-3575	-9047
	Gomel Oblast	17,3	61,3	21,4	-8245	-1669	-9914
	Grodno Oblast	17,4	59,8	22,8	-8029	-3488	-11517
	Minsk	14,5	67,9	17,6	-395	16249	15854
	Minsk Oblast	16,7	60,7	22,6	-10815	1574	-9241

* for Belarus: pre-able-bodied (age 0-15); able-bodied (age 16-60 - male; 16-55 - female); post-able-bodied (over 60 - male; 55 - female)

Region		Gross Domestic Product per capita (current prices in EUR)	Unemployment rate:			Unemployed for over 180 days (%)
			total (%)	male (%)	female (%)	
UE-25		21741	8.5	51	49	45.5
Poland	Rzeszowsko-tarnobrzeski subregion	4283	16.6	47	53	54.4
	Krosniensko-przemyski subregion	3338	21.0	49	51	56.2
	Ostrolecko-siedlecki subregion	3550	8.3	50	50	58.7
	Bialskopodlaski subregion	3404	18.5	52	48	58.3
	Chelmsko-zamojski subregion	3361	18.4	50	50	54.4
	Lubelski subregion	4306	15.9	49	51	53.9
	Bialostocko-suwalski subregion	4137	15.1	50	50	47.8
	Lomzynski subregion	3409	18.9	50	50	55.5
Ukraine	Lvivska Oblast	816	8.8	41	59	44.7
	Volynska Oblast	750	8.9	41	59	52.6
	Zakarpatska Oblast	625	7.0	33	67	14.6
	Rivnenska Oblast	667	9.7	45	55	43.6
	Ternopiiska Oblast	517	9.1	49	52	36.6
	Ivano-Frankivska Oblast	824	10.2	54	46	76.9
Belarus	Brest Oblast	2490	1.8	30	70	N/A
	Gomel Oblast		1.7	30	70	N/A
	Grodno Oblast		1.6	26	74	N/A
	Minsk		0,8	32	68	N/A
	Minsk Oblast		1,5	33	67	N/A

Region		Employment in:		
		industry (%)	agriculture (%)	services (%)
UE-25		27.5	4.9	67.6
Poland	Rzeszowsko-tarnobrzesci subregion	31.8	26.6	41.6
	Krosniensko-przemyski subregion	25.1	33.9	41.0
	Ostrolecko-siedlecki subregion	16.5	51.6	31.9
	Bialskopodlaski subregion	14.3	50.5	35.2
	Chelmsko-zamojski subregion	14.0	55.2	30.7
	Lubelski subregion	20.1	38.4	41.5
	Bialostocko-suwalski subregion	19.4	37.6	43.0
	Lomzynski subregion	14.1	56.9	29.0
Ukraine	Lvivska Oblast	17.1	20.0	62.9
	Volynska Oblast	19.2	13.1	15.5
	Zakarpatska Oblast	12.5	28.5	10.0
	Rivnenska Oblast	20.3	20.6	59.1
	Ternopiiska Oblast	18.4	13.7	67.9
	Ivano-Frankivska Oblast	25.3	26.1	16.9
Belarus	Brest Oblast	24.7	15.2	60.1
	Gomel Oblast	27.3	10.6	62.1
	Grodno Oblast	25.3	16.4	58.3
	Minsk	27.1	0.0	72.9
	Minsk Oblast	28.7	16.2	55.1

Region	Public water conduit		Public sewerage system		Waste water treatment			Greenhouse gas emissions in 2005 (1 000 tonnes. CO2 equivalent)	Municipal waste generated (kg per capita)	Number of SMEs
	in km	per 100 km ²	in km	per 100 km ²	municipal plants	industrial plants	treated waste water (% of total waste water)			
Rzeszowsko-tarnobrzescski subregion	7619.1	101.4	4111.3	54.7						
Krosniensko-przemyski subregion	4594	44.5	3906.3	37.8						
Ostrolecko-siedlecki subregion	4288.4	35.5	482.4	4.0	60	24	94.2	3365	147	53794
Bialskopodlaski subregion	3161	52.9	653.0	10.9	45	14	95.2	2050	139	17776
Chelmsko-zamojski subregion	5067.1	54.5	907.4	9.8	104	31	95.7	1968	118	41573
Lubelski subregion	8923.5	90.6	1622.7	16.5	74	38	95.0	3071	169	90129
Bialostocko-suwalski subregion	7738.2	52.0	1509.6	10.2	79	13	100.0	8613	532	91633
Lomzynski subregion	2882.0	54.2	368.8	6.9	27	15	100.0	3873	206	
Lviv oblast	4728.5	21.7	2176.3	10.0			96.1			
Volyn oblast	2602.0	13.0	788.1	3.9				330	13.7	5406
Zakarpattya oblast										8436
Ternopil oblast	1113.0	8.1	576.1	4.17	15	no	91.7	252	1.5	4403
Rivne oblast	1162.4	5.8	509.5	2.5	22	1	100.0	1034	300	4958
Ivano-Frankivsk oblast	1360.0	9.8	753.7	5.4		30		2523	861	7259
Brest oblast	2736.5	8.3	967.5	2.9				3904	433	2387
Gomel oblast								9206	205	
Grodno oblast	3678	14.6	2120.8	8.4	68		95.2			3784
Minsk oblast	3210		2252.4							

Region:	Nationality						
	Polish	Belarusian	Ukrainian	Romanian	Russian	Lithuanian	Other
Lubelskie voivodship	98.6	0.0	0.0	0.0	0.0	0.0	1.2
Podkarpackie voivodship	98.6	0.0	0.2	0.0	0.0	0.0	1.0
Podlaskie voivodship	93.5	3.7	0.1	0.0	0.1	0.4	1.5
Brest Oblast	1.8	85.0	3.8	0.0	8.7	0.0	0.7
Gomel Oblast	0.2	84.2	3.3	0.0	11.0	0.0	1.3
Grodno Oblast	24.8	62.3	1.8	0.0	10.1	0.0	1.0
Minsk	1.0	79.3	2.4	0.0	15.7	0.0	1.6
Minsk Oblast	1.9	86.6	1.6	0.0	9.0	0.0	0.9
Lvivska Oblast	0.7	0.2	94.8	0.0	3.6	0.0	0.7
Volynska Oblast	0.1	0.3	96.9	0.0	2.4	0.0	0.3
Zakarpatska Oblast	0.0	0.0	80.5	2.6	2.5	0.0	14.4
Rivenska Oblast	0.2	1.0	96.0	0.0	2.6	0.0	0.2
Ternopil'ska Oblast	0.3	0.9	97.8	0.0	1.2	0.0	0.0
Ivano-Frankiv'ska Oblast	0.1	0.1	97.5	0.0	1.8	0.0	0.5

ANNEX 3. LIST AND MAP OF THE ENVIRONMENTAL PROTECTION AREAS**(to be checked and amended by national/regional parties of the Programme)****National parks:**

- Bialowieski and Bieszczadzki (registered on the UNESCO World Heritage List)
- Szacki
- Narwianski
- Wigierski
- Roztoczanski
- Magurski
- Biebrzanski
- Yavoriv
- Beskyd
- Sinevir
- Karpatskiy
- Hutsulschyna
- Halytskyi
- Shatskyy
- Rivnenskiy

Landscape parks:

- Sobiborski
- Poleski
- Chelmski
- Strzelecki
- Szczepieszynski
- Kransobrodzki
- Puszczy Solskiej
- Poludniowo-Roztoczanski
- Czarnorzecko-Stryzowski
- Pogorza Przemyskiego
- Gor Slonnych
- Jasliski
- Cisniansko-Wetlinski
- Doliny Sanu
- Flat Land of Prypec River
- Stokhid
- Cheremske bogland in Manevichy District

- Flat Land of Turiya River in Kamin-Kashirskiy
- Kovel
- Ratnivskiy and Starovyzhvskiy Districts
- Dnisterskyi
- Polianytskyi
- Nadsluchanskiy
- Dermano-Mostivskiy
- Pryp'yat'-Stokhid

Reserves of biosphere:

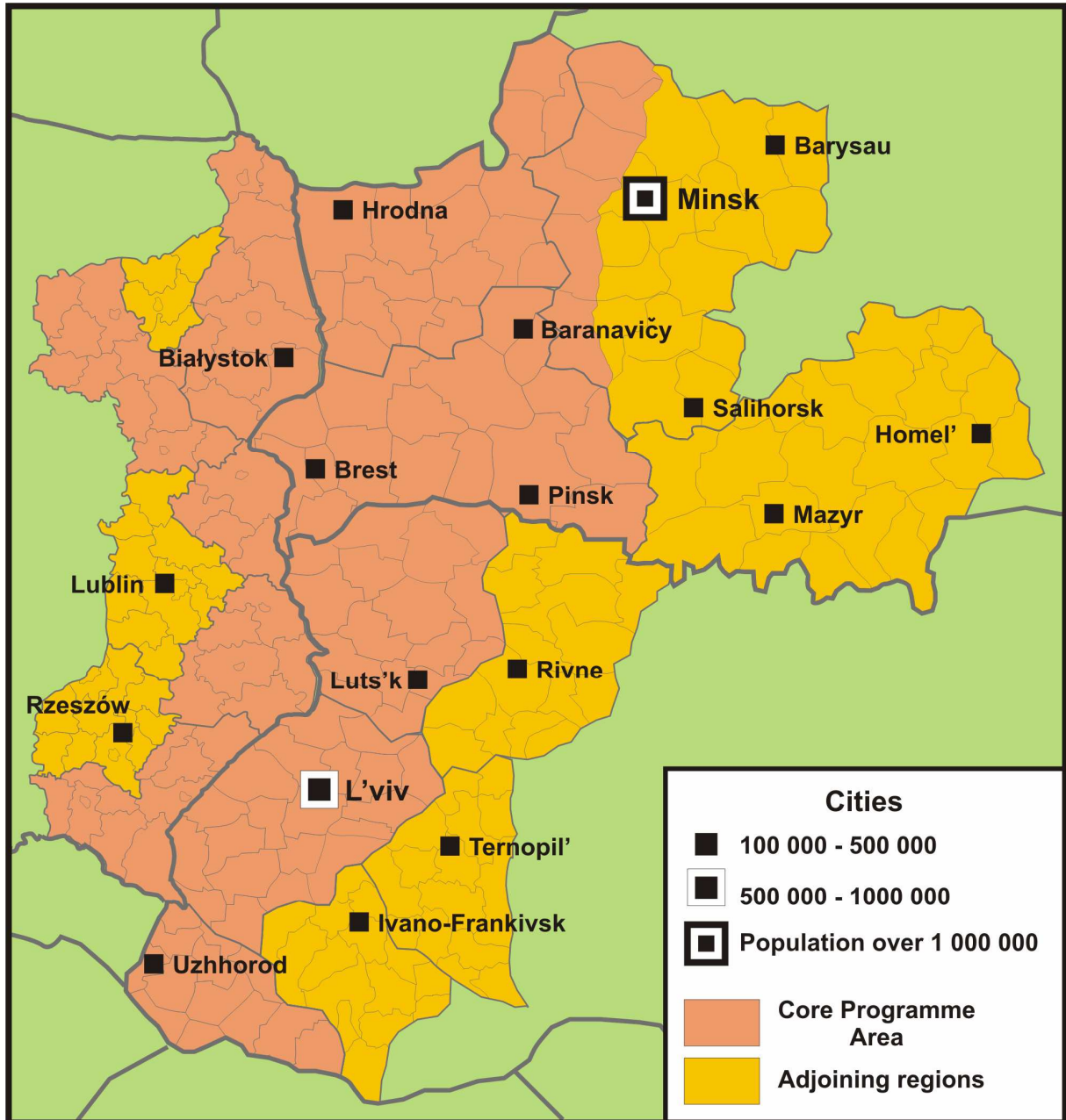
- "Western Polesie" (registered on the UNESCO World Heritage List).
- International "Eastern Carpathians"

Areas protected under NATURA 2000:

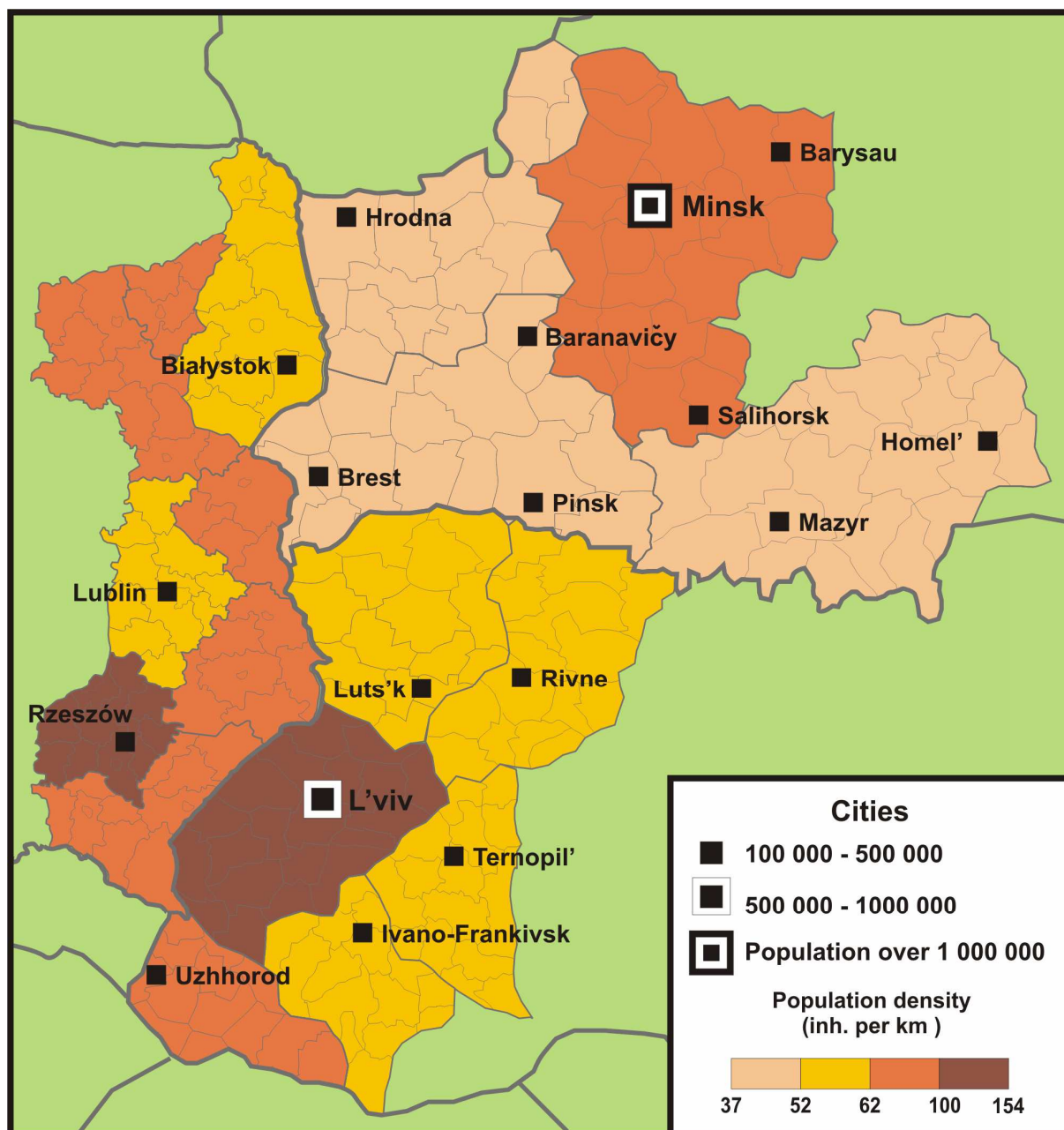
- Bagno Bubnow
- Chelmskie Torfowiska
- Dolina Dolnego Wieprza
- Dolina Srodkowego Bugu
- Lasy Janowskie
- Lasy Lukowskie
- Dolina Tysmienicy
- Lasy Parczewskie
- Lasy Strzeleckie
- Ostoja Poleska
- Puszcza Solska
- Roztocze
- Stawy W Tarnawatce
- Uroczysko Mosty-Zahajki
- Zbiornik Podedworze
- Zbiornik W Nieliszu
- Zlewnia Gornej Huczwy
- Dolina Dolnego Bugu
- Dolina Srodkowej Wisly
- Malopolski Przelom Wisly

ANNEX 4. MAPS

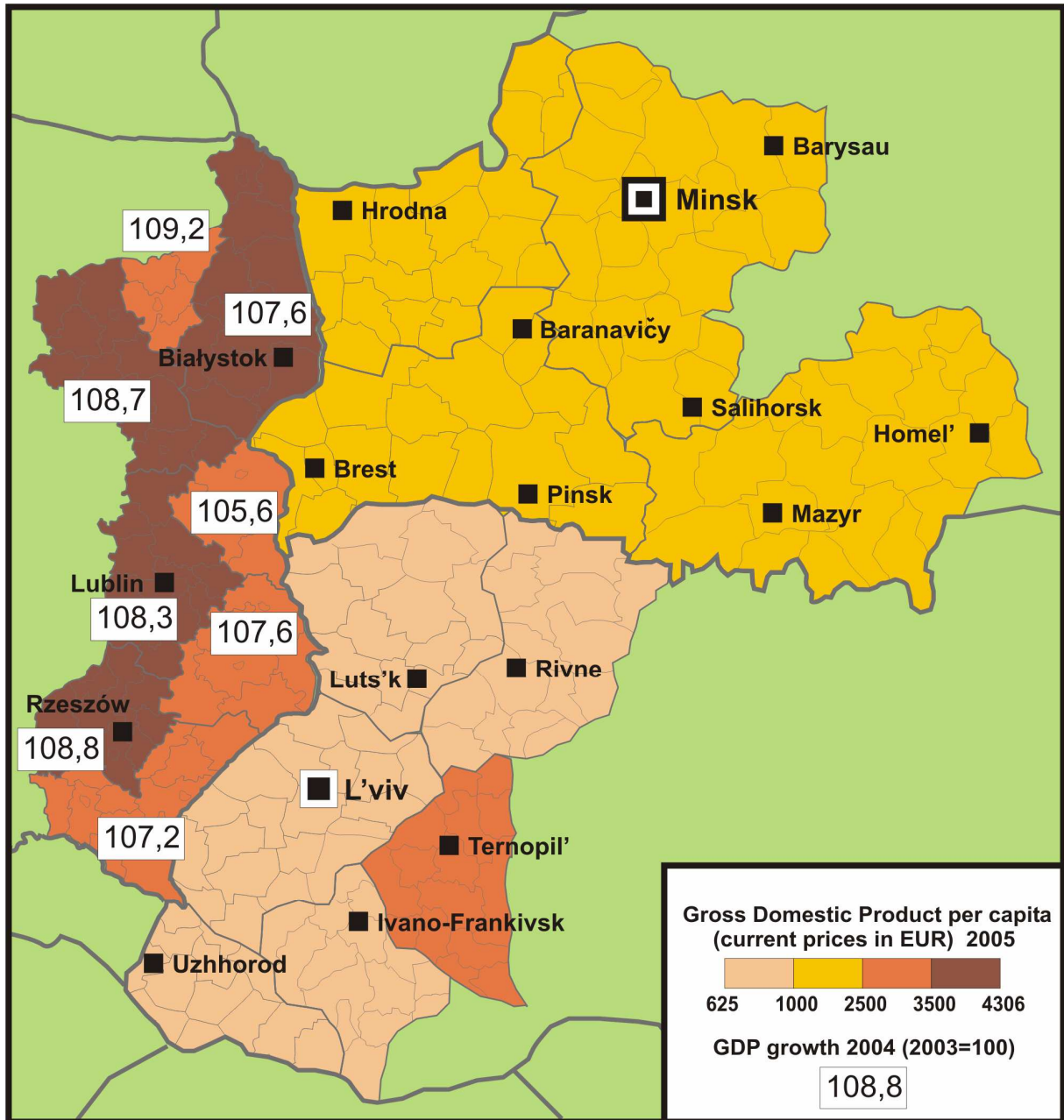
Programme Area



Population density (2005)



Gross Domestic Product 2005, GDP growth 2004



ANNEX 5. CODES FOR THE PRIORITY THEME DIMENSION***Research and technological development (R&TD), innovation and entrepreneurship***

- 01 R&TD activities in research centres
- 02 R&TD infrastructure (including physical plant, instrumentation and high-speed computer networks linking research centres) and centres of competence in a specific technology
- 03 Technology transfer and improvement of cooperation networks between small businesses (SMEs), between these and other businesses and universities, postsecondary education establishments of all kinds, regional authorities, research centres and scientific and technological poles (scientific and technological parks, technopoles, etc.)
- 04 Assistance to R&TD, particularly in SMEs (including access to R&TD services in research centres)
- 05 Advanced support services for firms and groups of firms
- 06 Assistance to SMEs for the promotion of environmentally-friendly products and production processes (introduction of effective environment managing system, adoption and use of pollution prevention technologies, integration of clean technologies into firm production)
- 07 Investment in firms directly linked to research and innovation (innovative technologies, establishment of new firms by universities, existing R&TD centres and firms, etc.)
- 08 Other investment in firms
- 09 Other measures to stimulate research and innovation and entrepreneurship in SMEs

Information society

- 10 Telephone infrastructures (including broadband networks)
- 11 Information and communication technologies (access, security, interoperability, risk-prevention, research, innovation, e-content, etc.)
- 12 Information and communication technologies (TEN-ICT)
- 13 Services and applications for the citizen (e-health, e-government, e-learning, einclusion, etc.)
- 14 Services and applications for SMEs (e-commerce, education and training, networking, etc.)
- 15 Other measures for improving access to and efficient use of ICT by SMEs

Transport

- 16 Railways
- 17 Railways (TEN-T)
- 18 Mobile rail assets
- 19 Mobile rail assets (TEN-T)
- 20 Motorways
- 21 Motorways (TEN-T)
- 22 National roads
- 23 Regional/local roads
- 24 Cycle tracks
- 25 Urban transport
- 26 Multimodal transport
- 27 Multimodal transport (TEN-T)
- 28 Intelligent transport systems
- 29 Airports
- 30 Ports
- 31 Inland waterways (regional and local)
- 32 Inland waterways (TEN-T)

Energy

- 33 Electricity
- 34 Electricity (TEN-E)
- 35 Natural gas
- 36 Natural gas (TEN-E)

-
- 37 Petroleum products
 - 38 Petroleum products (TEN-E)
 - 39 Renewable energy: wind
 - 40 Renewable energy: solar
 - 41 Renewable energy: biomass
 - 42 Renewable energy: hydroelectric, geothermal and other
 - 43 Energy efficiency, co-generation, energy management

Environmental protection and risk prevention

- 44 Management of household and industrial waste
- 45 Management and distribution of water (drinking water)
- 46 Water treatment (waste water)
- 47 Air quality
- 48 Integrated prevention and pollution control
- 49 Mitigation and adaptation to climate change
- 50 Rehabilitation of industrial sites and contaminated land
- 51 Promotion of biodiversity and nature protection (including Natura 2000)
- 52 Promotion of clean urban transport
- 53 Risk prevention (including the drafting and implementation of plans and measures to prevent and manage natural and technological risks)
- 54 Other measures to preserve the environment and prevent risks

Tourism

- 55 Promotion of natural assets
- 56 Protection and development of natural heritage
- 57 Other assistance to improve tourist services

Culture

- 58 Protection and preservation of the cultural heritage
- 59 Development of cultural infrastructure
- 60 Other assistance to improve cultural services

Urban and rural regeneration

- 61 Integrated projects for urban and rural regeneration

Increasing the adaptability of workers and firms, enterprises and entrepreneurs

- 62 Development of life-long learning systems and strategies in firms; training and services for employees to step up their adaptability to change; promoting entrepreneurship and innovation
- 63 Design and dissemination of innovative and more productive ways of organizing work
- 64 Development of specific services for employment, training and support in connection with restructuring of sectors and firms, and development of systems for anticipating economic changes and future requirements in terms of jobs and skills

Improving access to employment and sustainability

- 65 Modernisation and strengthening labour market institutions
- 66 Implementing active and preventive measures on the labour market
- 67 Measures encouraging active ageing and prolonging working lives
- 68 Support for self-employment and business start-up
- 69 Measures to improve access to employment and increase sustainable participation and progress of women in employment to reduce gender-based segregation in the labour market, and to reconcile work and private life, such as facilitating access to childcare and care for dependent persons
- 70 Specific action to increase migrants' participation in employment and thereby strengthen their social integration

Improving the social inclusion of less-favoured persons

71 Pathways to integration and re-entry into employment for disadvantaged people; combating discrimination in accessing and progressing in the labour market and promoting acceptance of diversity at the workplace

Improving human capital

72 Design, introduction and implementation of reforms in education and training systems in order to develop employability, improving the labour market relevance of initial and vocational education and training, updating skills of training personnel with a view to innovation and a knowledge based economy

73 Measures to increase participation in education and training throughout the lifecycle, including through action to achieve a reduction in early school leaving, gender-based segregation of subjects and increased access to and quality of initial vocational and tertiary education and training

74 Developing human potential in the field of research and innovation, in particular through post-graduate studies and training of researchers, and networking activities between universities, research centres and businesses

Investment in social infrastructure

75 Education infrastructure

76 Health infrastructure

77 Childcare infrastructure

78 Housing infrastructure

79 Other social infrastructure

Mobilisation for reforms in the fields of employment and inclusion

80 Promoting partnerships, pacts and initiatives through the networking of relevant stakeholders

Strengthening institutional capacity at national, regional and local level

81 Mechanisms for improving good policy and programme design, monitoring and evaluation at national, regional and local level, capacity building in the delivery of policies and programmes.

Reduction of additional costs hindering the outermost regions development

82 Compensation of any additional costs due to accessibility deficit and territorial fragmentation

83 Specific action addressed to compensate additional costs due to size market factors

84 Support to compensate additional costs due to climate conditions and relief difficulties

Technical assistance

85 Preparation, implementation, monitoring and inspection

86 Evaluation and studies; information and communication